

# CUSTOM LIVE CENTERS

## Royal's Unique Advantages

When choosing a supplier for a custom live center, **operating life is a very important factor** to consider:

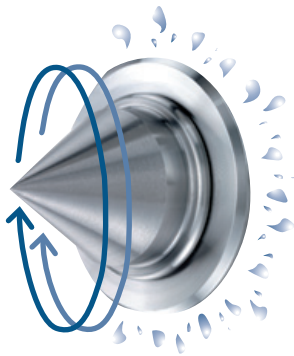
### Failure is not an Option

When a customer purchases a custom-made live center, it is usually designed for a specific job. If the center fails during that job, it could be weeks before a replacement is obtained and the job can get back on line. How would this downtime affect your production deadlines, costs, customer relationships, etc?

### Maximize Your Investment

Because custom-made live centers are typically more expensive than regular stock centers, **extending the operating life reduces your overall costs**. When comparing competitive quotes, keep in mind that a small difference in the initial purchase price can be quickly offset by an increase in operating life.

Custom live centers from Royal Products provide a solution to these issues with the exclusive Royal Roto-Shield™.



**ROYAL  
ROTO-SHIELD™  
TECHNOLOGY**

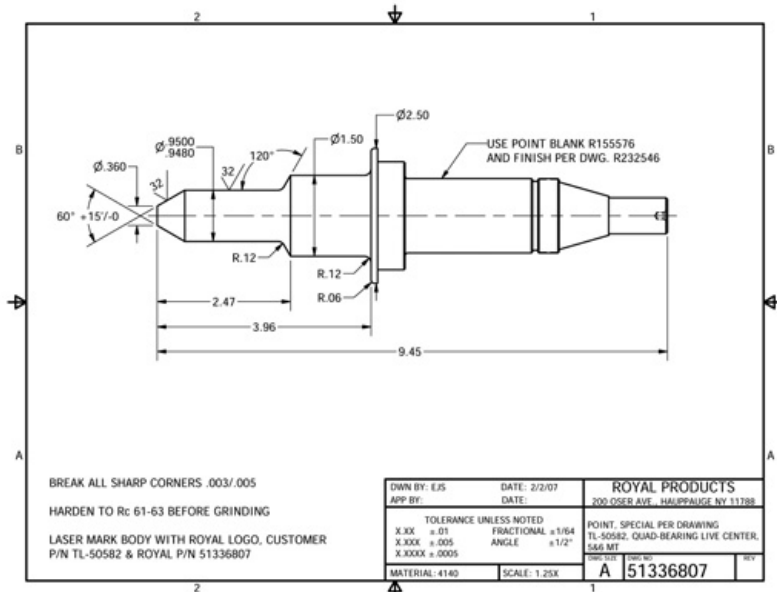
The Royal Roto-Shield™ is a specially shaped steel coolant slinger coupled with a long-life, spring-loaded seal that is resistant to abrasion, high temperatures, and virtually all metalworking fluids.

By incorporating Royal Roto-Shield™ Technology into our custom-made live centers whenever the design allows, a dramatic increase in operating life is achieved through the following effects:

- Coolant is deflected, keeping it from penetrating the center
- Seal wear is minimized
- Grease is not flushed away
- Bearings are protected from harmful fines, chips, and dust
- Grease retains consistency

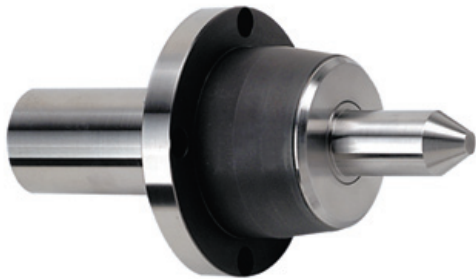
**The next time you need a custom center, make sure it includes the exclusive Royal Roto-Shield™.**

**You can't afford to take a chance on anything less.**



# CUSTOM LIVE CENTERS

## Quotation Sheet

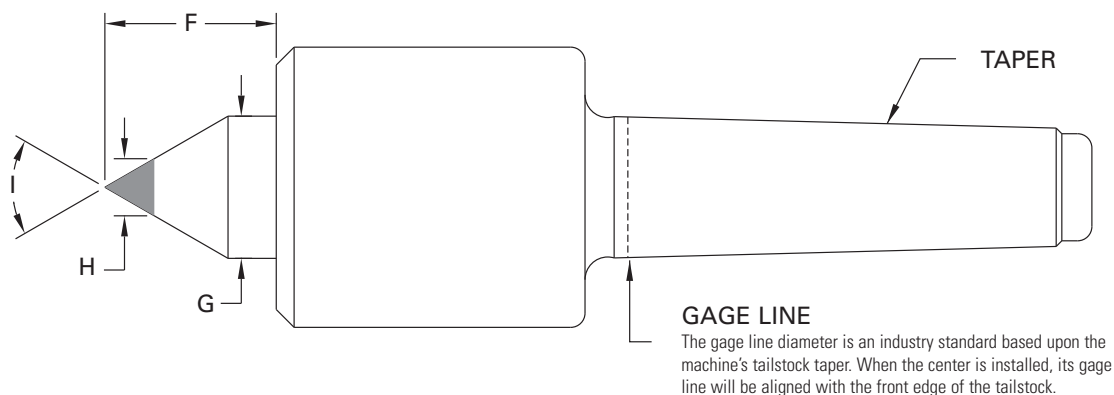


Royal Products welcomes the opportunity to supply you with custom live centers. Simply fill out this quotation sheet or send us a sketch and we will design a live center that best suits your needs. If you need technical assistance, please contact a Royal Products applications engineer at 1-800-645-4174.

**CONTACT NAME** \_\_\_\_\_ **COMPANY** \_\_\_\_\_

**TEL:** \_\_\_\_\_ **FAX:** \_\_\_\_\_

**BRIEF DESCRIPTION OF APPLICATION:** \_\_\_\_\_



**TAPER** \_\_\_\_\_

**WORKPIECE WEIGHT** \_\_\_\_\_

**MAX. RPM REQUIREMENTS** \_\_\_\_\_

**G. POINT DIAMETER** \_\_\_\_\_

**H. CARBIDE TIP DIAMETER (if applicable)** \_\_\_\_\_

**F. POINT EXTENSION FROM BODY** \_\_\_\_\_

**I. POINT ANGLE ( $60^{\circ} \begin{smallmatrix} +15' \\ -0 \end{smallmatrix}$  unless otherwise indicated)** \_\_\_\_\_

Royal Products designs and builds hundreds of custom live centers each year. Whenever possible, our engineers make an effort to design around standard models to minimize cost and reduce lead-times. In these cases, certain dimensions will be fixed (head diameters, head lengths, etc.). If you have special requirements that go beyond the scope of this quotation sheet, please fax us a separate sketch or print with all relevant information.

# CUSTOM DEAD CENTERS

## Quotation Sheet

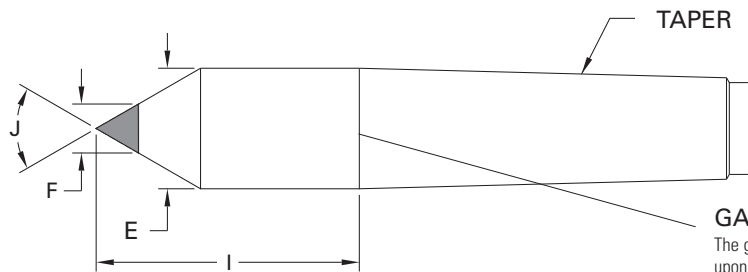


Royal Products welcomes the opportunity to supply you with custom dead centers. Simply fill out this quotation sheet or send us a sketch and we will design a dead center that best suits your needs. If you need technical assistance, please contact a Royal Products applications engineer at 1-800-645-4174.

**CONTACT NAME** \_\_\_\_\_ **COMPANY** \_\_\_\_\_

**TEL:** \_\_\_\_\_ **FAX:** \_\_\_\_\_

**BRIEF DESCRIPTION OF APPLICATION:** \_\_\_\_\_



**GAGE LINE**

The gage line diameter is an industry standard based upon the machine's tailstock taper. When the center is installed, its gage line will be aligned with the front edge of the tailstock.

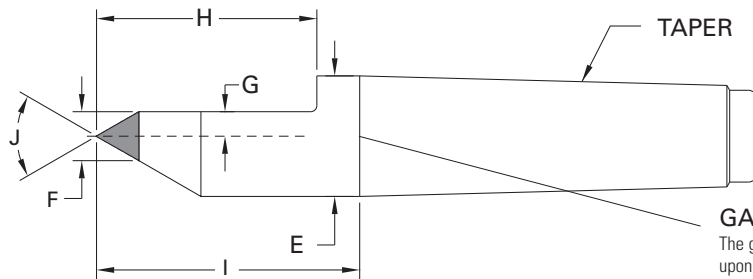
**TAPER** \_\_\_\_\_

**E. HEAD DIAMETER** (if different from standard gage line diameter) \_\_\_\_\_

**F. CARBIDE TIP DIAMETER** (if applicable) \_\_\_\_\_

**I. EXTENSION FROM GAGE LINE** \_\_\_\_\_

**J. POINT ANGLE** ( $60^\circ \begin{smallmatrix} +15^\circ \\ -0 \end{smallmatrix}$  unless otherwise indicated) \_\_\_\_\_



**GAGE LINE**

The gage line diameter is an industry standard based upon the machine's tailstock taper. When the center is installed, its gage line will be aligned with the front edge of the tailstock.

**TAPER** \_\_\_\_\_

**E. HEAD DIAMETER** (if different from standard gage line diameter) \_\_\_\_\_

**F. CARBIDE TIP DIAMETER** (if applicable) \_\_\_\_\_

**G. CLEARANCE HEIGHT** (indicate from centerline) \_\_\_\_\_

**H. CLEARANCE LENGTH** \_\_\_\_\_

**I. EXTENSION FROM GAGE LINE** \_\_\_\_\_

**J. POINT ANGLE** ( $60^\circ \begin{smallmatrix} +15^\circ \\ -0 \end{smallmatrix}$  unless otherwise indicated) \_\_\_\_\_

**Note:** If this quotation sheet does not allow you to clearly express your requirements, please fax us a separate sketch or print with all relevant information.